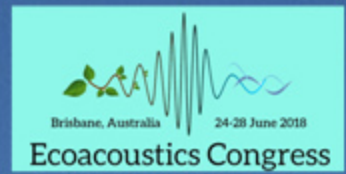


# Automated monitoring of male rutting vocal activity in a natural population of impala (*Aepyceros melampus*) in Namibia

Volodina Elena<sup>1</sup>, Volodin Ilya<sup>1,2</sup>, Frey Roland<sup>3</sup>

1 Moscow Zoo, Russia  
 2 Lomonosov Moscow State University, Russia  
 3 Leibniz Institute for Zoo and Wildlife Research, Germany  
<http://www.bioacoustica.org>



[volodinsvoc@mail.ru](mailto:volodinsvoc@mail.ru)

## STUDY SITE AND ANIMALS



Namibia, Okambara Ranch, 15000 hectares (S 22.69, E 18.21)



May, 2015  
 800 free-ranging common impala

SongMeter SM2+ near a water pool

Recording schedule:  
 9 min with 1 min pause,  
 54 min per hour,  
 1080 min per night.

## RECORDINGS

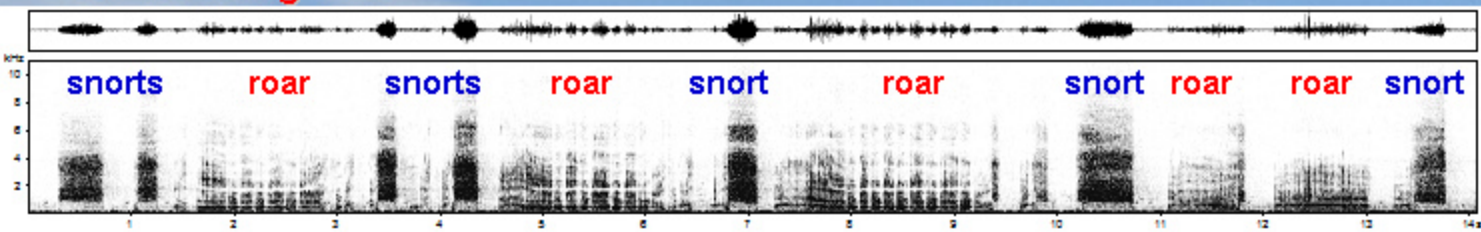


From May 2 to May 28, 2015, 27 nights, 20 hours per night, from 14:00 p.m. to 10:00 a.m.

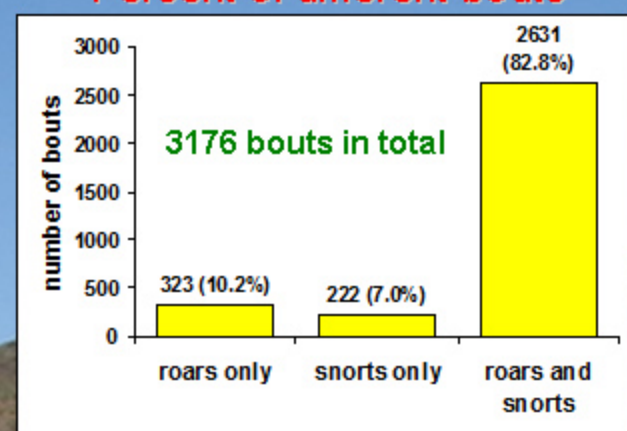
## MALE RUTTING CALLS

Male impala produce bouts of rutting calls, roars and snorts. Most bouts consist of alternating roars and snorts.

Bout of rutting calls



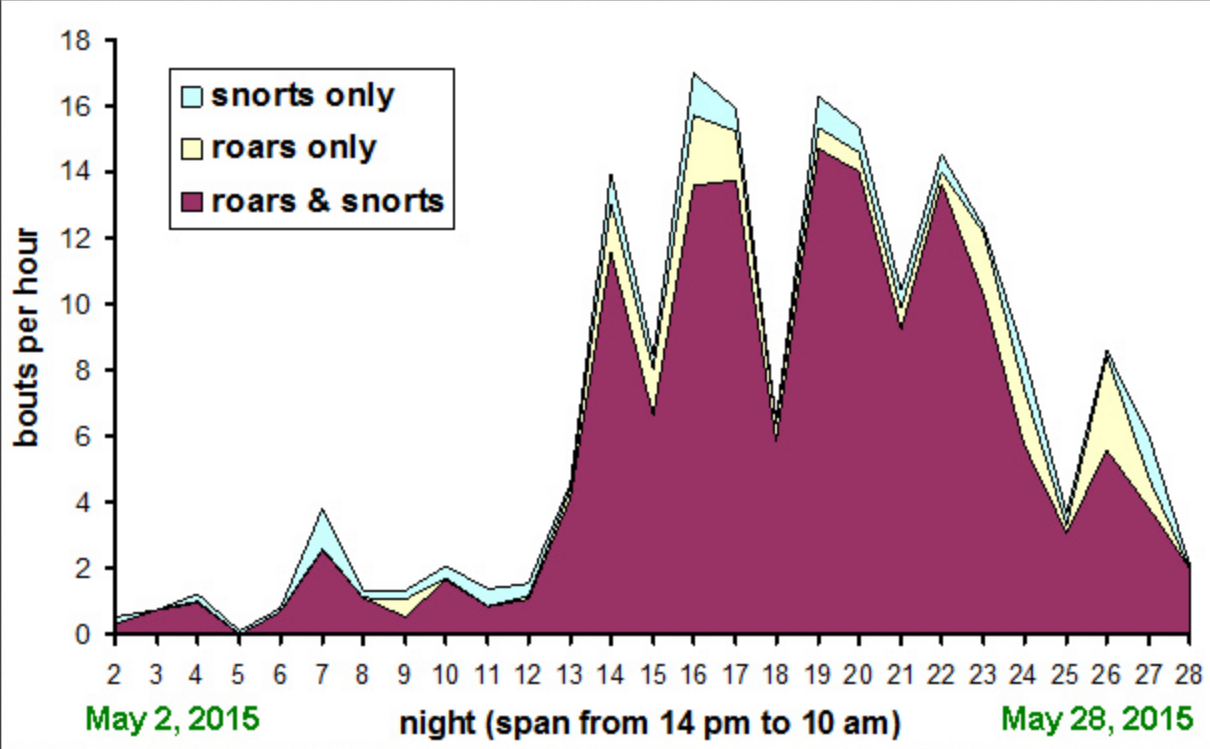
Percent of different bouts



## RUTTING VOCAL ACTIVITY

### During the rut

At the beginning of the rut (10 nights, May 2-12), vocal activity varied between 0.09 and 2.05 bouts/hour (mean 1.35±0.98).  
 During the active rut (15 nights, May 13-27), vocal activity varied between 4.56 and 17.0 bouts/hour (mean 10.80±4.55).  
 At the end of the rut (May 28) vocal activity was 2.11 bouts/hour.



### During the night

During a night (from 14:00 p.m. to 10:00 a.m.) vocal activity varied between 5.10 and 17.52 bouts/hour. Maximum was at 17:00; second peak was at 05:00 a.m.; two periods of lowered vocal activity were at 19:00-21:00 and at 03:00-04:00 a.m.  
 On average for the total of 27 nights, male impala produced 9.75±3.36 bouts of rutting calls per hour.

